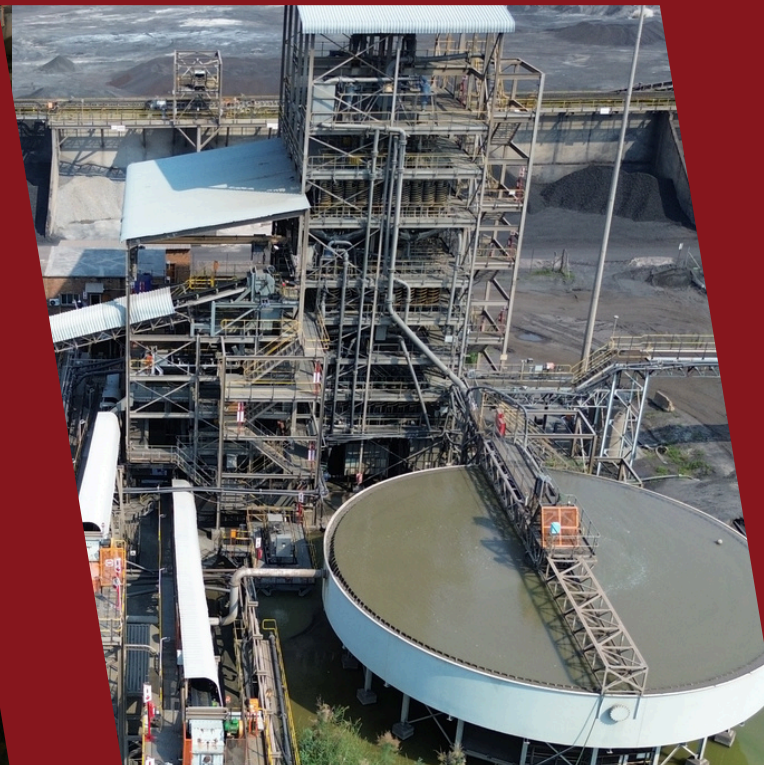




Minprotech
mineral processing technology

COMPANY PROFILE



ABOUT US



Minprotech (Pty) Ltd is a South African mineral processing company specialising in the recovery of fine chromite. With seven active operations, we manage and maintain mineral processing plants on behalf of our clients.

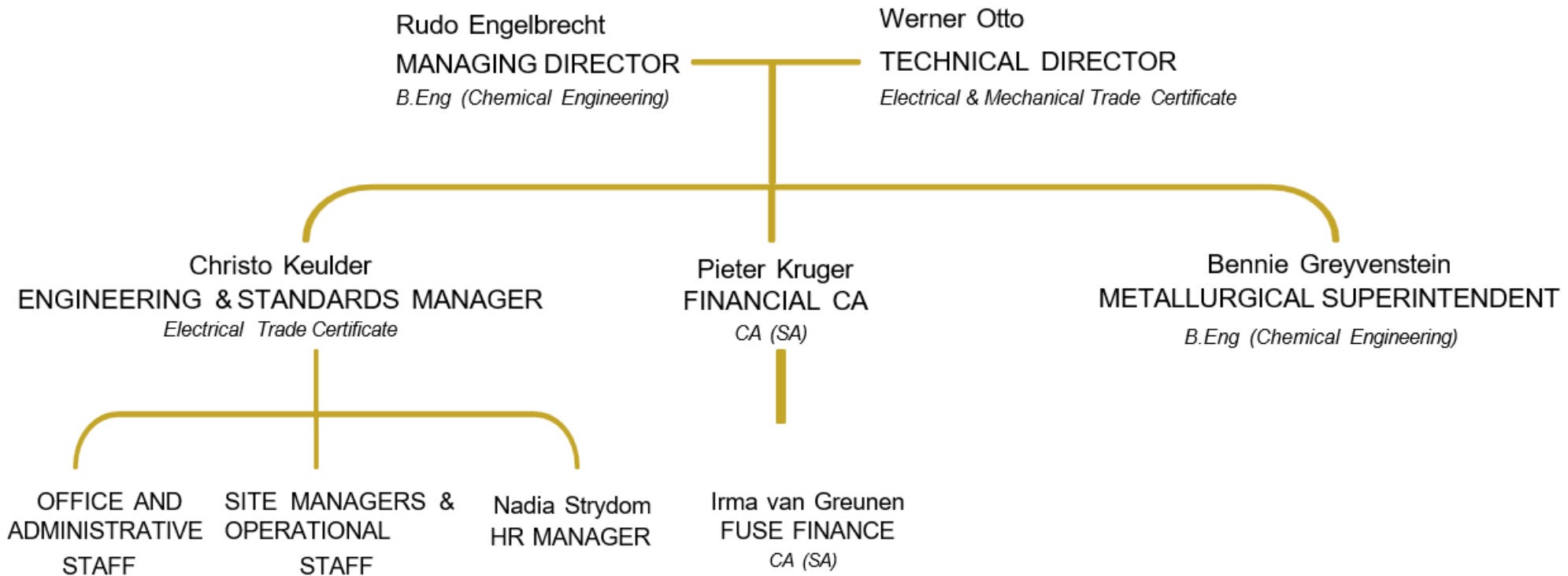
Currently, Minprotech employs over 190 permanent staff members and has delivered exceptional results, producing more than 1.7 million tons of metallurgical-grade concentrate from tailings over the past decade. The company is 51% black-owned through the Siyandisa Trust, reflecting our commitment to meaningful transformation.

Headquartered in Rustenburg, North West Province, our facilities include an engineering workshop that provides essential support to our sites and a fully equipped mineral processing laboratory.

This laboratory offers comprehensive test work capabilities, supporting:

- 1) Existing operations to ensure optimal performance.
- 2) Feasibility studies for evaluating new opportunities.

MANAGEMENT STRUCTURE

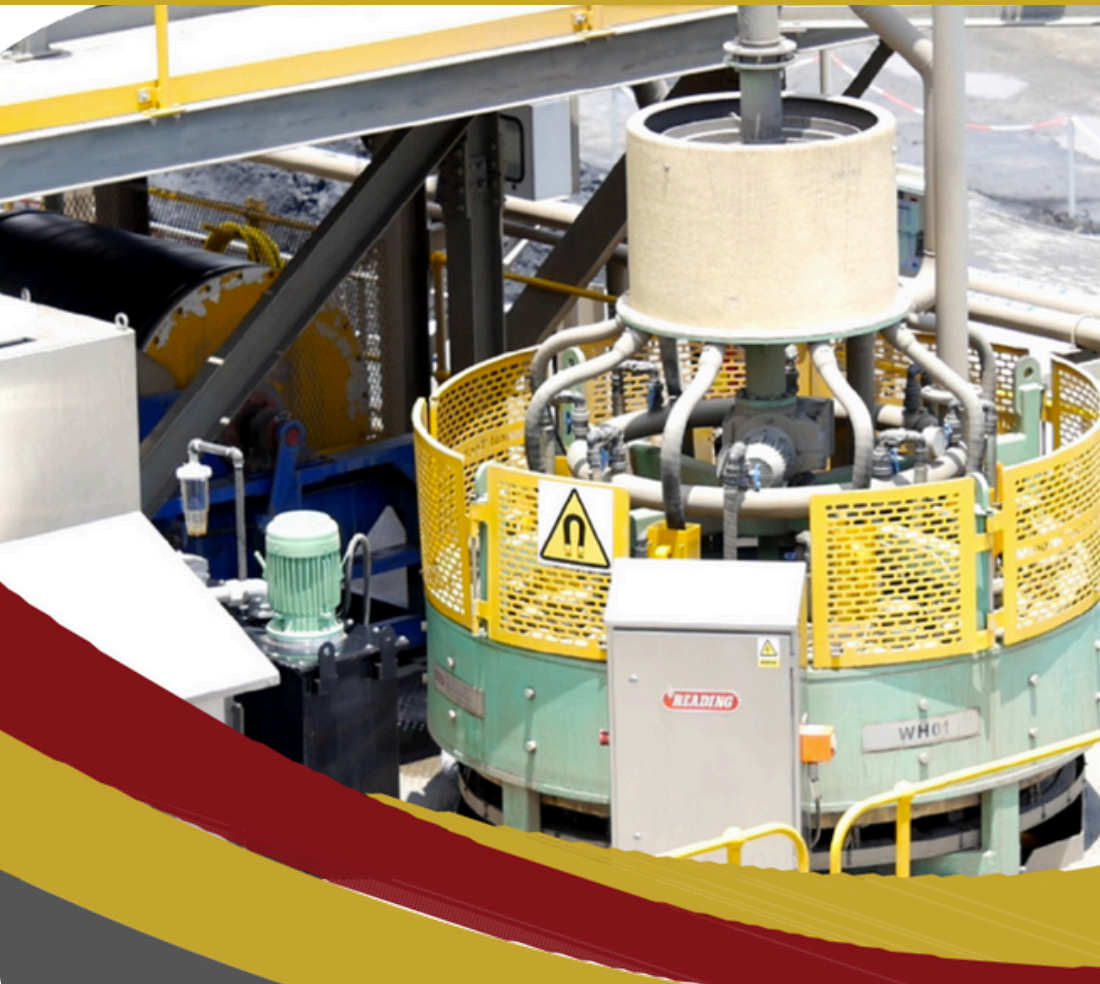


With a Strong track record of innovation and operational excellence, Minprotech remains dedicated to advancing the mineral processing industry.

OUR GOAL

Our long-term goal is to become a leading, sustainable and efficient medium sized contractor operator company which add value to their clients by supplying operations and maintenance services in the mineral processing plant of the client.

OUR STRATEGY



The growth and sustainability of the Company will depend on:

- (i) in the short term, focus on efficiency and optimise processes in current operations in order to optimise value
- (ii) in the medium term, investigate and keep up to date with new technology in order to upgrade or expand current processes;
- (iii) in the medium – long term, use expertise and experience gained in current operations to diversify into the processing of other minerals.

TECHNOLOGY

Minprotech was the first company in South Africa to utilize WHIMS technology in the recovery of fine Chromite from waste streams. The WHIMS technology is effective in recovering Chromite in the $-300\mu\text{m}$ range. In order to supply a complete solution to the client, a combination of technologies is required. The close collaboration between Minprotech and the OEM's of the selected technologies ensure the effective and efficient implementation of offered solutions.



SERVICES

The experienced team from Minprotech ensure a broad range of skills which compliments each other. This enables the company to provide the following services to their clients:

- Feasibility test work
- Project Management
- Process Operation
- Engineering & Maintenance solutions
- Metallurgical optimisation

PROJECTS

Completed and
operational



Thorncliff
Glencore
(completed)



Doornbosch
ECM Samancor
(operational)



Tweefontein
ECM Samancor
(operational)



Millsell
WCM Samancor
(operational)



Mooinooi
WCM Samancor
(operational)



Steelpoort
ECM Samancor
(completed)



Lannex
ECM Samancor
(operational)



Lesedi
WCM Samancor
(operational)

OUR VALUES

People

Safety

Maintaining a safe and healthy working environment across all our operations is our top priority.

We take pride in our exceptionally low accident and injury rates, and we are proud to have achieved five consecutive years without a lost-time injury

Respect

We are committed in providing a positive working environment free of discrimination and harassment in all our operations.

We act and treat each other with dignity and respect, as we believe that employees who are treated with respect have a higher level of performance.

Community and environment

Social

We are actively engaging the local communities in the areas in which we operate by prioritizing the local population when employing staff.

Additionally, we prioritize local service providers in procurement.

Enviromental

The sustainability of all our operations is dependant on our compliance to all rules and regulations as stipulated by the authorities and our clients.

We continuously strive to minimise the impact of our operations on the environment.

INTEGRITY AND CORPORATE GOVERNANCE

The success and sustainability of Minprotech is also dependant on the trust and support from all stakeholders which include the employees, suppliers, clients, government and the communities.

Therefore, Minprotech is committed to the highest level of integrity and do have zero tolerance for any form of corruption. We also aim to have the maximum level of transparency in our dealing with all stakeholders



HEALTH AND SAFETY

At Minprotech we strive to create a culture in which safe working practices are promoted. We all work together and make sure that everyone complies with the safety rules. Relevant training with regards to specific jobs and procedures are on-going to ensure the safety of our operation. We are a formidable team and constantly strive to uphold to standards set by our clients and the Mine Health and Safety Act.



SAFETY ACHIEVEMENTS

- Doornbosch Tails- 9 Years
- Tweefontein- 8 Years
- Millsell- 8 Years
- Mooinooi-8 Years
- Sibanye-1 Year
- Doornbosch Main- 1 Year
- Lannex- 100 Days
- Lesedi-200 Days

PHYSICAL ADDRESS

472 Arnoldstad Road Waterkloof Rustenburg
0299

POSTAL ADDRESS

Postnet Suite 838 Private Bage X 82329 Rustenburg
0300

087 135 1081

087 135 1082

admin@minprotech.co.za

Rudo Engelbrecht (Managing Director)

Werner Otto (Technical Director)

