



**Minprotech**  
mineral processing technology

COMPANY **PROFILE**



## ABOUT US



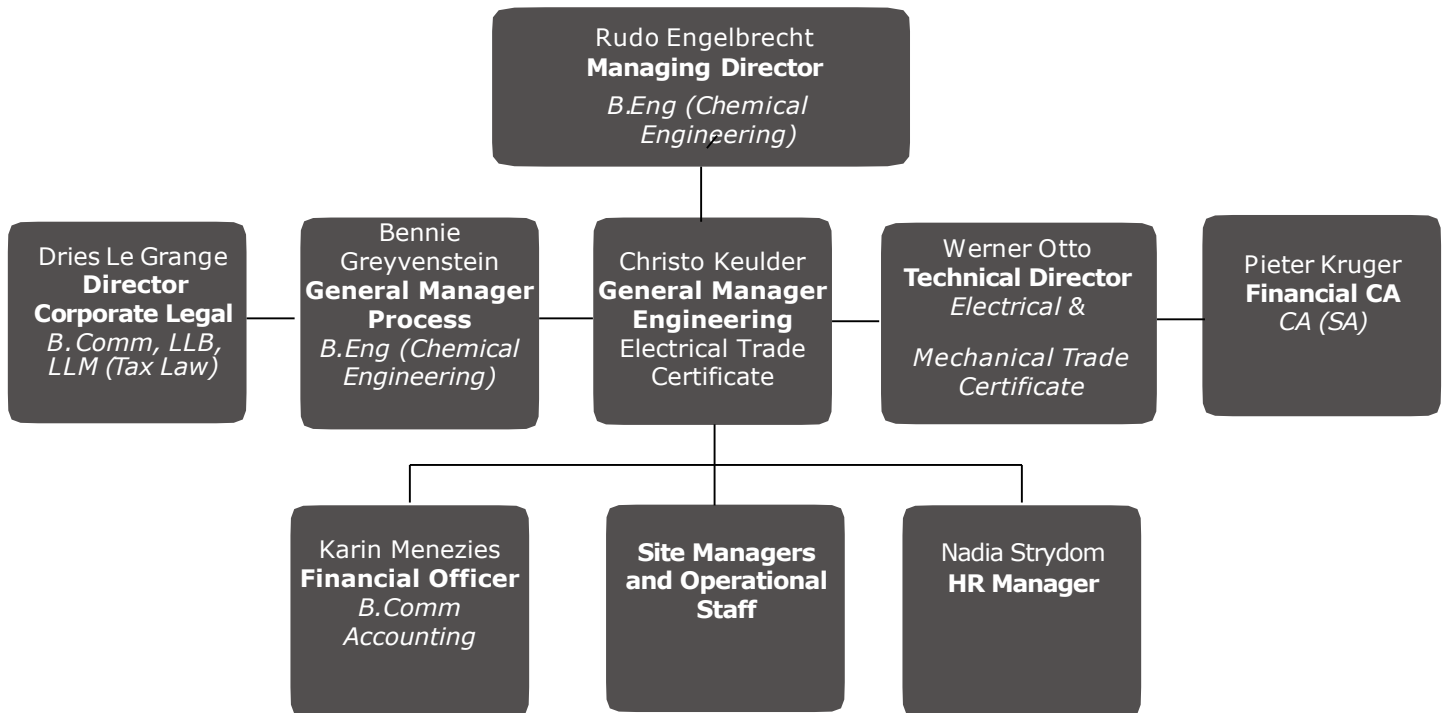
Minprotech (PTY) Ltd. is a South African mineral processing company which specialises in the recovery of fine Chromite. We currently do have five active operations where we operate and maintain mineral processing plants for our clients.

Minprotech currently employs more than 120 permanent employees, and has produced over 1.4 million tons of metallurgical grade concentrate from tailings in the last 10 years. Minprotech is 26% black owned through the Siyandisa Trust.

The headquarters of Minprotech is based in Rustenburg in the North-West Province of South Africa. Facilities at headquarters include an engineering workshop which renders support services to the different sites as well as a mineral processing laboratory which has the capability of conducting full scale test work as; (i) a support service to the current operations or (ii) as part of feasibility studies during the investigation of new opportunities.



# OUR MANAGEMENT STRUCTURE





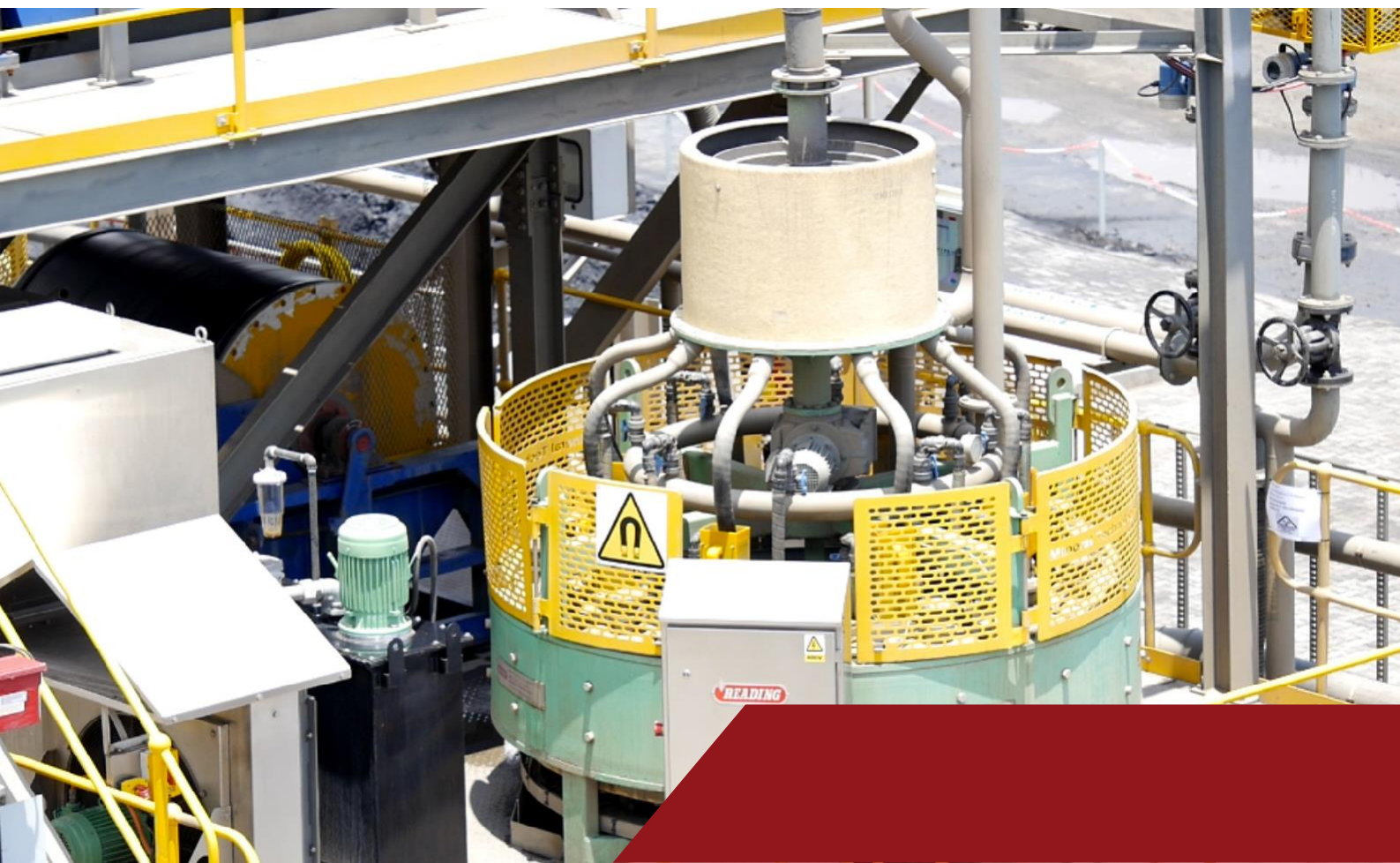
## OUR GOAL

Our long-term goal is to become a leading, sustainable and efficient medium sized contractor operator company which add value to their clients by supplying operations and maintenance services in the mineral processing plant of the client.



## OUR STRATEGY

The growth and sustainability of the Company will depend on: (i) in the short term, focus on efficiency and optimise processes in current operations in order to optimise value; (ii) in the medium term, investigate and keep up to date with new technology in order to upgrade or expand current processes; (iii) in the medium –long term, use expertise and experience gained in current operations to diversify into the processing of other minerals.





# TECHNOLOGY

Minprotech was the first company in South Africa to utilize WHIMS technology in the recovery of fine Chromite from waste streams. The WHIMS technology is effective in recovering Chromite in the - 300µm range. In order to supply a complete solution to the client, a combination of technologies is required. The close collaboration between Minprotech and the OEM's of the selected technologies ensure the effective and efficient implementation of offered solutions.



## SERVICES OFFERED



The experienced team from Minprotech ensure a broad range of skills which compliments each other. This enables the company to provide the following services to their clients:

- Feasibility test work
- Project Management
- Process Operation
- Engineering and maintenance solutions
- Metallurgical optimisation

# OUR VALUES



## People

**Safety** – Our people are our most important asset. Maintaining a safe and healthy working environment in all our operations is our highest priority. We can proudly say that the level of accidents and injuries is exceptionally low in the company and that during the past five years no lost time injury occurred in the company.

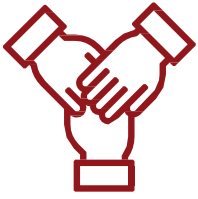
**Respect** – We are committed in providing a positive working environment free of discrimination and harassment in all our operations. We act and treat each other with dignity and respect. We believe that employees who are treated with respect have a higher level of performance.



## Community and the Environment

**Social responsibility** – We are actively engaging the local communities in the areas in which we operate by prioritizing the local population when employing staff. We also prioritise local service providers during our procurement process.

**Environmental responsibility** – the sustainability of all our operations is dependant on our compliance to all rules and regulations as stipulated by the authorities and our clients. We continuously strive to minimise the impact of our operations on the environment.



## Integrity and Corporate Governance

The success and sustainability of Minprotech is also dependant on the trust and support from all stakeholders which include the employees, suppliers, clients, government and the communities. Therefore, Minprotech is committed to the highest level of integrity and do have zero tolerance for any form of corruption. We also aim to have the maximum level of transparency in our dealing with all stakeholders.

# LIST OF PROJECTS

## (Completed and operational)

- Thorncliff, Glencore – completed
- Doornbosch, ECM Samancor – operational
- Doornbosch Main Plant, ECM Samancor – Construction
- Tweefontein, ECM Samancor – operational
- Millsell, WCM Samancor – operational
- Mooinooi, WCM Samancor – operational
- Steelpoort, ECM Samancor - completed



# HEALTH AND SAFETY

At Minprotech we strive to create a culture in which safe working practices are promoted. We all work together and make sure that everyone complies with the safety rules. Relevant training with regards to specific jobs and procedures are on-going to ensure the safety of our operation. We are a formidable team and constantly strive to uphold to standards set by our clients and the Mine Health and Safety Act.

## Safety achievements

### Current Operations LTI free years:

- Winner 2022 MMMA Safety award for Plants & Concentrators -150Ktpm
- Doornbosch – 8 years
- Tweefontein – 7 years
- Steelpoort – 3.5 years
- Millsell – 6 years
- Mooinooi – 6 years
- Sibanye – 1 year







Minprotech (Pty) Ltd

REG NO: 2014/063489/07 VAT NO: 428 0268 170



PHYSICAL ADDRESS: 472 ARNOLDISTAD ROAD  
WATERKLOOF  
RUSTENBURG, 0299

POSTAL ADDRESS: POSTNET SUITE 838  
PRIVATE BAG X 82329  
RUSTENBURG, 0300

TELEPHONE: 087 135 1081  
FAX: 087 135 1082  
EMAIL: [admin@minprotech.co.za](mailto:admin@minprotech.co.za)

Rudo Engelbrecht: 083 345 6129 (Managing Director)  
Werner Otto: 082 785 1841 (Technical Director)